



TORNADO

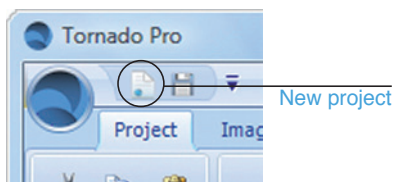
QUICK GUIDE

FOLLOW THESE STEPS TO MAKE YOUR FIRST ROTATING PRESENTATION

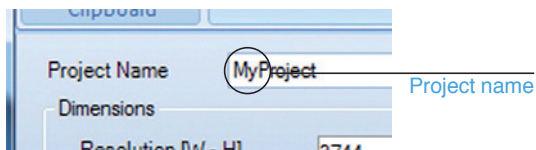
1. PREPARATION

- Make sure that you have a number of pictures ready to use in the project.
- Open the program and click on the New Project button

Demo pictures are available on the program CD in the Goodies folder.

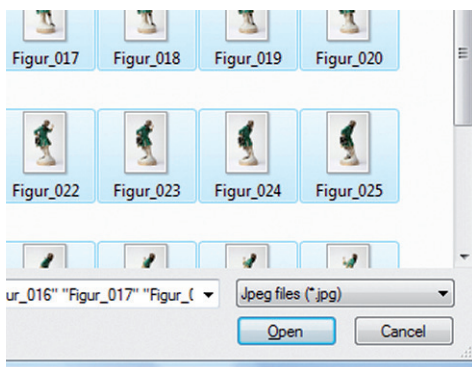
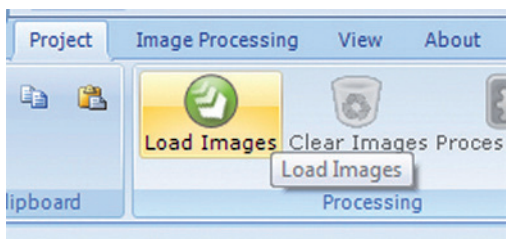


2. NAME YOUR PROJECT



3. LOAD IMAGES

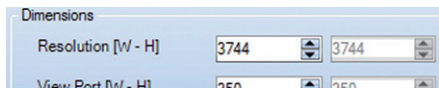
Click on Load Images and navigate to your picture folder. Choose if the pictures for your project are JPEG files or TIFF files. Choose the pictures You want to use and click Open.



Note: All the pictures must have the same pixel dimensions

4. SET THE RESOLUTION

Navigate back to the Project Tab and type the maximum resolution for the project.



Note: The resolution can not exceed the resolution of the pictures

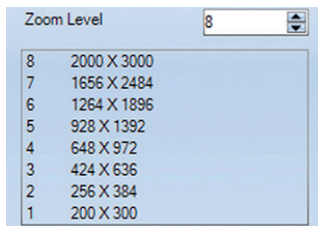
5. SET THE VIEWPORT

Type the wanted size of the viewport. This is the size that appears in the internet browser.



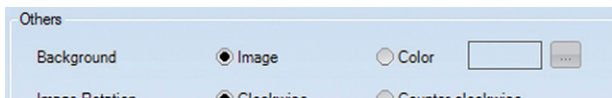
6. NUMBER OF ZOOM LEVELS

Choose the number of zoomlevels in the final presentation. To enable the user to look at the pictures in 100% the Zoom Level must be set at 8 levels



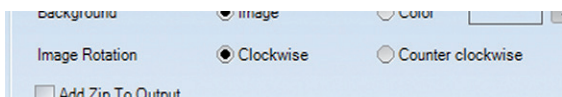
7. SET LOADING SCREEN

Choose if the presentation should show with a color or with a picture when the presentation is loading in the browser



8. CLOCKWISE OR COUNTER CLOCKWISE

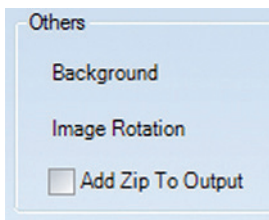
Choose if the object is photographed rotating clockwise or counterclockwise.



Note: CW or CCW can be set as default in the settings

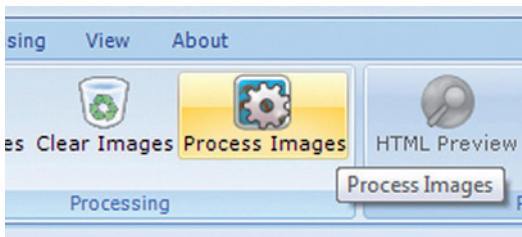
9. ZIP OUTPUT

If checked, the Add Zip To Output function will also pack the final presentation as a ZIP file

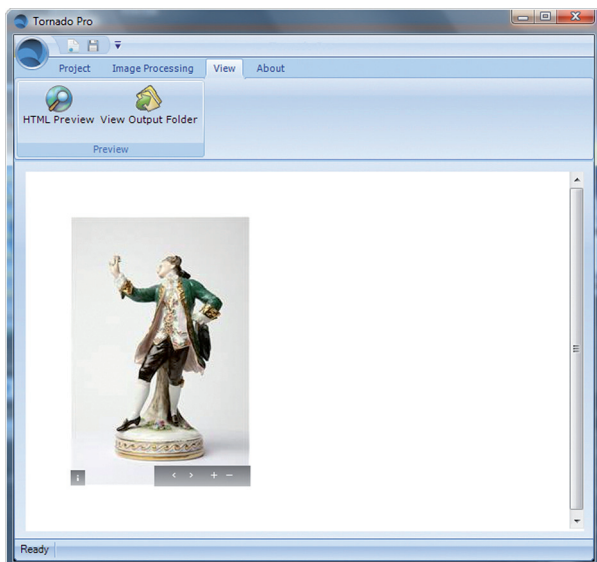


10. PROCESS

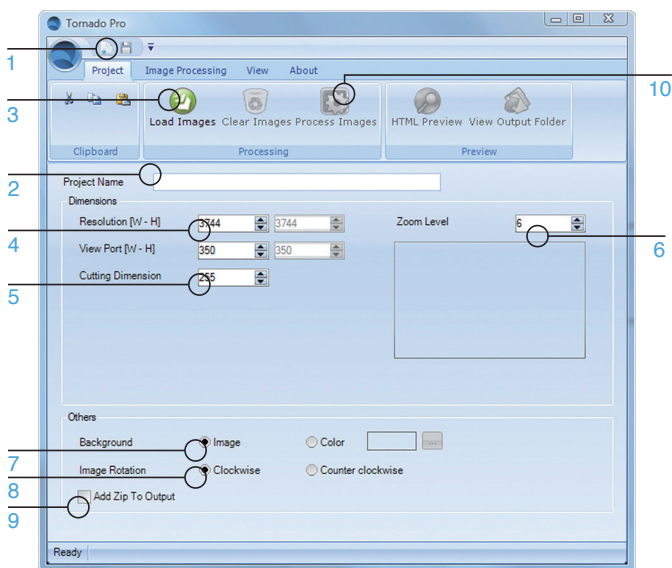
Click on Process Images



When the presentation is done it can be seen in the View tab
Note: To see it in a normal internet browser just click on the HTML Preview button



INTERFACE OVERVIEW



1. START NEW PROJECT
2. NAME YOUR PROJECT
3. LOAD IMAGES
4. SET THE RESOLUTION
5. SET THE VIEWPORT
6. NUMBER OF ZOOM LEVELS
7. SET THE LOADING SCREEN
8. CLOCKWISE OR COUNTER CLOCKWISE
9. ZIP OUTPUT
10. PROCESS

SYSTEM REQUIREMENTS

CPU: Pentium® 800MHz or better

OS: Windows® 98 Second Edition (SE), Windows® 2000 Professional, Windows® XP Home Edition / Professional, . NET Framework 3.5

HARDWARE: PC Laptop, PC Workstation or equal, with a minimum of 2GB RAM, 4GB of available hard disk space, CD-ROM drive is required for installation

INSTALLATION

Lorem ipsum dolor sit amet, consectetur adipiscing elit. Pellentesque rutrum. Aenean tristique felis id augue. Cras suscipit fringilla sapien. Maecenas interdum. Vivamus sagittis aliquam lorem. Ut ultricies, erat in eleifend accumsan, felis orci malesuada eros, ac scelerisque arcu enim non erat. Integer lacinia. Ut sed ante ut sapien bibendum laoreet. Nulla libero. Duis et nibh. Aenean quis libero. Nullam non risus. Cras sagittis ante. Maecenas sem.

Nulla facilisi. Etiam iaculis nisl nec dui. Nunc fermentum hendrerit diam. Suspendisse risus quam, tristique in, malesuada eu, commodo placerat, risus. Ut et dolor quis justo blandit accumsan. Mauris pharetra ante vitae libero. Vivamus orci tortor, consequat vel, porta quis, fermentum placerat, orci. Pel

SERIAL NUMBER

123-234-345-456-567-678